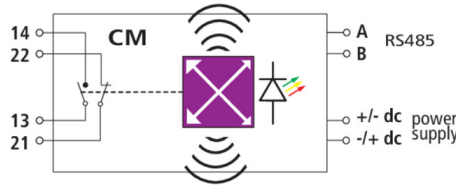


## DRC MCM AL XT (910 698)

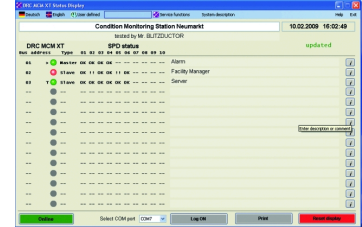
- Condition monitoring of arresters with RFID LifeCheck
- Permanently monitors up to 10 arresters (40 signal lines)
- Minimal wiring
- Remote signalling via remote signalling contact or optional RS485 interface
- Connection to DEHNrecord Alert
- Additional transmission of the part number



Figure without obligation



Basic circuit diagram DRC MCM AL XT



DRC MCM AL XT status display software

DIN rail mounted device with integrated RFID LifeCheck sensor for condition monitoring of max. 10 BLITZDUCTOR XT / XTU with LifeCheck. Transmission of the status, the bus address and BXT part numbers to the DEHNrecord Alert communication unit.

Type	DRC MCM AL XT
Part No.	910 698
For testing	up to 10 BLITZDUCTOR XT / XTU ML arresters
For testing	up to 10 BLITZDUCTOR XT / XTU ML EX arresters; for use in non-hazardous atmospheres only! Observe thread measure!
Operating elements	multiway button, DIP switch
Indicator	three-coloured LED (green, orange, red)
Input voltage range (d.c.) ( $U_{IN}$ )	18-48 V
Max. nominal current consumption ( $I_{IN}$ )	100 mA
RFID transmission frequency	125 kHz
Physical interface	RS485
Message: Replacing of SPD recommended	LED, remote signalling contact (break and make contact)
Test cycle	continuous
Operating temperature range for monitoring 10 BXT / BXTU arresters	-20 °C ... +60 °C
Operating temperature range for monitoring 8 BXT / BXTU arresters	-40 °C ... +80 °C
Operating temperature range for addressing the BXT of 10 BXT / BXTU	0 °C ... +60 °C
Degree of protection	IP 20
For mounting on	35 mm DIN rails acc. to EN 60715
Connection	screw
Cross-sectional area, solid / flexible	0.08-2.5 mm <sup>2</sup>
Tightening torque (terminal)	0.4 Nm
Enclosure material	polyamide PA 6.6
Colour	grey
Test standards	EN 61010-1, 61000-6-2/4, ETSI EN 300 330-1 V1.7.1
Type of remote signalling contact	make (no) and break contact (nc)
Technical data of remote signalling contact	contact resistance < 25 ohms; leakage current < 1 µA
Switching capacity (d.c.)	350 V / 0.12 A
Switching capacity (a.c.)	250 V / 0.07 A
Delivery includes	base part, monitoring module, quick guide and labelling system
Weight	67 g
Customs tariff number (Comb. Nomenclature EU)	90308900
GTIN	4013364337053
PU	1 pc(s)

We reserve the right to introduce changes in performance, configuration and technology, dimensions, weights and materials in the course of technical progress. The figures are shown without obligation.