

WB D40.50 SE WA110 V2A (105 348)

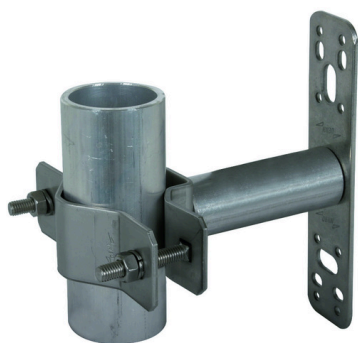
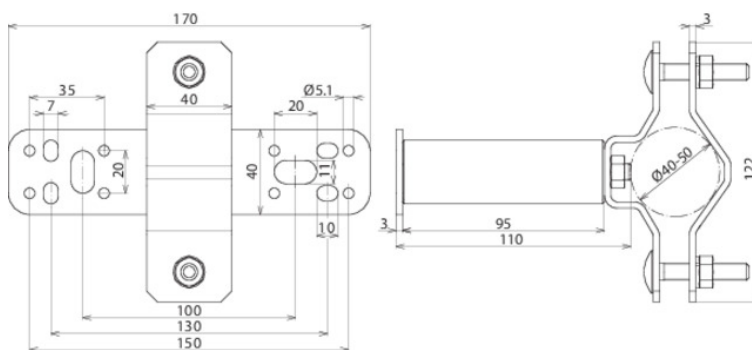


Figure without obligation



Same as Part No. 105 342, however, with spacing sleeve length 95 mm

Type	WB D40.50 SE WA110 V2A
Part No.	105 348
Material	StSt
Fixing	[8x] Ø5.1 / [4x] 7 x 10 / [2x] 11 x 20 mm
Distance from wall	110 mm
Clamping range for air-termination rod	40-50 mm
Material of screw	StSt
Weight	540 g
Customs tariff number (Comb. Nomenclature EU)	85389099
GTIN	4013364287013
PU	1 pc(s)

We reserve the right to introduce changes in performance, configuration and technology, dimensions, weights and materials in the course of technical progress. The figures are shown without obligation.