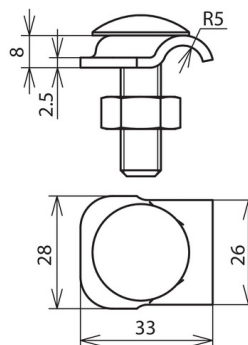




**KB 6.10 FRM10X35 CU (390 157)**



Figure without obligation



Arrangement:

Type	KB 6.10 FRM10X35 CU
Part No.	390 157
Material of clamp	Cu
Clamping range Rd	6-10 mm
Clamping range (stranded / cable)	35-120 mm <sup>2</sup>
Material thickness	2.5 mm
Screw	⬆ M10 x 35 mm
Material of screw / nut	StSt
Screw-retaining thread insert	yes
Lightning current carrying capability (10/350 µs)	100 kA / 50 kA <sup>*)</sup>
Standard	EN 62561-1
Weight	53 g
Customs tariff number (Comb. Nomenclature EU)	85359000
GTIN	4013364032194
PU	1 pc(s)

<sup>\*)</sup> For exact assignment, see test certificate.

We reserve the right to introduce changes in performance, configuration and technology, dimensions, weights and materials in the course of technical progress. The figures are shown without obligation.