



## KS 8.10 FL30 CU (318 207)

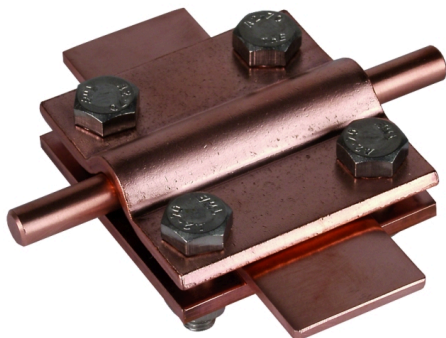
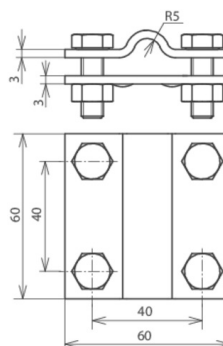


Figure without obligation



Type	KS 8.10 FL30 CU
Part No.	318 207
Material of clamp	Cu
Clamping range Rd / FI	8-10 / 30 mm
Clamping range FI / FI	30 / 30 mm
Clamping range (stranded / cable)	35-120 mm <sup>2</sup>
Screw	M8 x 25 mm
Material of screw / nut	StSt (V4A)
Material No.	1.4571 / 1.4404 / 1.4401
ASTM / AISI:	316Ti / 316L / 316
Dimensions	60 x 60 x 3 mm
Lightning current carrying capability (10/350 µs)	<sup>*)</sup>
Standard	EN 62561-1
Short-circuit current (AC 50 Hz / DC) (1 s; ≤ 300 °C)	29 kA
Weight	253 g
Customs tariff number (Comb. Nomenclature EU)	85359000
GTIN	4013364021488
PU	1 pc(s)

<sup>\*)</sup> See test certificate for exact classification.

We reserve the right to introduce changes in performance, configuration and technology, dimensions, weights and materials in the course of technical progress. The figures are shown without obligation.