



KS B11.11 8.10 V2A (380 130)

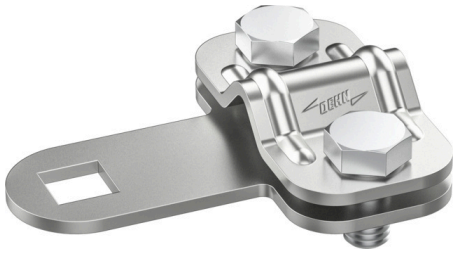
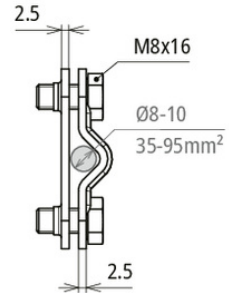
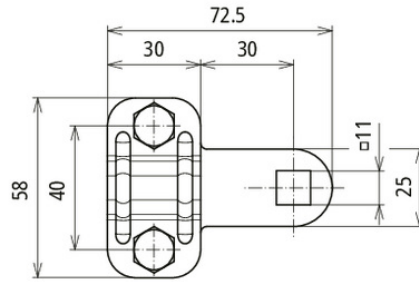


Figure without obligation



Type	KS B11.11 8.10 V2A
Part No.	380 130
Clamping range Rd	8-10 mm
Cable clamping range	35-95 mm ²
Material	StSt
Fixing	square hole 11 x 11 mm
Screw	● M8 x 16 mm
Material of screw	StSt
Lightning current carrying capability (10/350 µs)	100kA ^{*)}
Standard	EN 62561-1
Weight	110 g
Customs tariff number (Comb. Nomenclature EU)	85359000
GTIN	4013364512481
PU	50 pc(s)

^{*)} For exact assignment see test certificate.

We reserve the right to introduce changes in performance, configuration and technology, dimensions, weights and materials in the course of technical progress. The figures are shown without obligation.