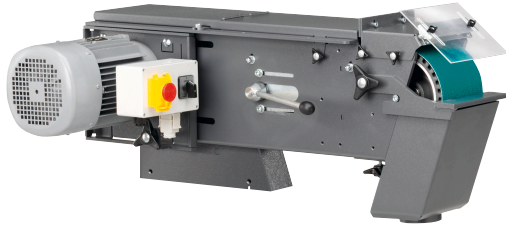


GRIT GI 150 2H

Basic belt grinder, 150 mm switchable

High-performance belt grinder, modular expandable, for industrial and series applications, ideal for machining stainless steel.

Part number: 7 902 05 00 40 3



FEIN benefits

- > Expandable because of additional modules.
- > Quite robust AC motor provides grinding with steady speed.
- > Speeds optimal for metal and stainless steel working at 1 500/3 000 rpm.
- > Detachable swarf collector.
- > Connection for extraction option available.
- > Drive disk with polyurethane coating
- > Work level is individually adjustable.
- > Patented belt-tensioning system.
- > Low vibrations.

Supplied

- ✓ 1 CEE plug (16 A)
- ✓ 1 grinding belt 150 x 2,000 mm (K 36 R)

Technical data

GENERAL TECHNICAL DATA

Input	2.6 / 3.1 kW
Current/Voltages	3 x 400/440V 50/60Hz
Speed, no load	1,500 / 3,000 rpm
Belt size	150 x 2,000 mm
Weight	82 kg

Examples of use

